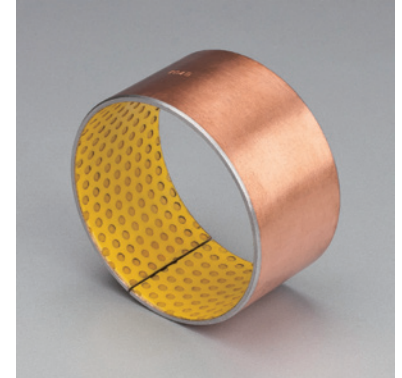
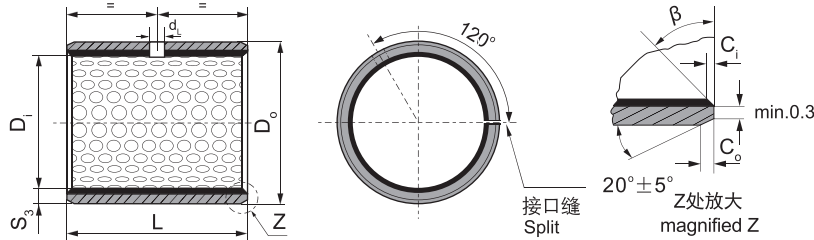


JLB-2 轴套规格及公差 JLB-2 Sleeve Bushing Specification & Tolerance



内外倒角 ID and OD chamfers

S_3	C_o	C_i	β
1.0	0.6 ± 0.3	0.30 ± 0.2	$30^\circ \pm 5^\circ$
1.5	0.7 ± 0.3	0.50 ± 0.2	$30^\circ \pm 5^\circ$

S_3	C_o	C_i	β
2.00	1.2 ± 0.4	0.50 ± 0.3	$30^\circ \pm 5^\circ$
2.50	1.8 ± 0.6	0.80 ± 0.3	$45^\circ \pm 5^\circ$

单位Unit: mm

轴径 Shaft D_s h8	座孔 Housing H7 D_H	(OD) 外径公差 Tolerance D_o	(ID)压装后 内孔公差 After fixed $D_{i,a}$	配合间隙 Clearance D_D	壁厚 Wall thick- ness S_3	油孔 Oil hole d_L	长度 L $^{0}_{-0.40}$															
							10	15	20	25	30	35	40	45	50	60						
10 $^{-0.022}$	12 $^{+0.018}$	12 $^{+0.065}_{+0.030}$	10.108 10.040	0.130 0.040	0.980 0.955	4	1010	1015	1020													
12 $^{-0.027}$	14 $^{+0.018}$	14 $^{+0.065}_{+0.030}$	12.108 12.040				1210	1215	1220													
14 $^{-0.027}$	16 $^{+0.018}$	16 $^{+0.065}_{+0.030}$	14.108 14.040				1415	1420														
15 $^{-0.027}$	17 $^{+0.018}$	17 $^{+0.065}_{+0.030}$	15.108 15.040				1515	1520	1525													
16 $^{-0.027}$	18 $^{+0.018}$	18 $^{+0.065}_{+0.030}$	16.108 16.040				1615	1620	1625													
18 $^{-0.027}$	20 $^{+0.021}$	20 $^{+0.075}_{+0.035}$	18.111 18.040				1815	1820	1825													
20 $^{-0.033}$	23 $^{+0.021}$	23 $^{+0.075}_{+0.035}$	20.131 20.050	0.164 0.050	1.475 1.445	6	2015	2020	2025	2030												
22 $^{-0.033}$	25 $^{+0.021}$	25 $^{+0.075}_{+0.035}$	22.131 22.050				2215	2220	2225	2230												
25 $^{-0.033}$	28 $^{+0.021}$	28 $^{+0.075}_{+0.035}$	25.131 25.050				2515	2520	2525	2530												
28 $^{-0.033}$	32 $^{+0.025}$	32 $^{+0.085}_{+0.045}$	28.155 28.060	0.188 0.060	1.970 1.935	8			2820	2825	2830											
30 $^{-0.033}$	34 $^{+0.025}$	34 $^{+0.085}_{+0.045}$	30.155 30.060				3020	3025	3030	3035	3040											
35 $^{-0.039}$	39 $^{+0.025}$	39 $^{+0.085}_{+0.045}$	35.155 35.060	0.194 0.060	2.460 2.415	8			3520	3525	3530	3535	3540									
40 $^{-0.039}$	44 $^{+0.025}$	44 $^{+0.085}_{+0.045}$	40.155 40.060				4020	4025	4030	4035	4040	4045	4050									
45 $^{-0.039}$	50 $^{+0.025}$	50 $^{+0.085}_{+0.045}$	45.195 45.080	0.234 0.080	2.460 2.415	8			4520	4525	4530	4535	4540	4545	4550							
50 $^{-0.039}$	55 $^{+0.030}$	55 $^{+0.100}_{+0.055}$	50.200 50.080				5030	5035	5040	5045	5050	5060										
55 $^{-0.046}$	60 $^{+0.030}$	60 $^{+0.100}_{+0.055}$	55.200 55.080	0.246 0.080	2.460 2.415	8					5530	5535	5540	5545	5550	5560						
60 $^{-0.046}$	65 $^{+0.030}$	65 $^{+0.100}_{+0.055}$	60.200 60.080				6030	6035	6040	6045	6050	6060										

JLB-2 轴套规格及公差 JLB-2 Sleeve Bushing Specification & Tolerance

轴径 Shaft D _s h8	座孔 Housing H7 D _H	(OD) 外径公差 Tolerance D _O	(ID)压装后 内孔公差 After fixed D _{i,a}	配合间隙 Clearance D _O	壁厚 Wall thick- ness S ₃	油孔 Oil hole d _L	长度 L ⁰ _{-0.40}												
							40	50	60	80	90	95	100	110	120				
65 -0.046	70 +0.030	70 +0.100 +0.055	65.200 65.080	0.246 0.080	2.460 2.415	8	6540	6550	6560										
70 -0.046	75 +0.030	75 +0.100 +0.055	70.200 70.080				7040	7050	7060	7080									
75 -0.046	80 +0.030	80 +0.100 +0.055	75.200 75.080				7540	7550	7560	7580									
80 -0.046	85 +0.035	85 +0.120 +0.070	80.265 80.100	0.313 0.100	2.450 2.385	9.5	8040	8050	8060	8080									
85 -0.054	90 +0.035	90 +0.120 +0.070	85.265 85.100	0.321 0.100			8540	8550	8560	8580									
90 -0.054	95 +0.035	95 +0.120 +0.070	90.265 90.100				9040	9050	9060	9080	9090								
100 -0.054	105 +0.035	105 +0.120 +0.070	100.265 100.100				10050	10060	10080	10090	10095								
105 -0.054	110 +0.035	110 +0.120 +0.070	105.265 105.100				10550	10560	10580	10590	10595	105100	105110						
110 -0.054	115 +0.035	115 +0.120 +0.070	110.265 110.110				11050	11060	11080	11090	11095	110100	110110						
120 -0.054	125 +0.040	125 +0.170 +0.100	120.270 120.110				0.324 0.100	12050	12060	12080	12090	12095	120100	120110					
125 -0.063	130 +0.040	130 +0.170 +0.100	125.270 125.110	12550				12560	12580	12590	12595	125100	125110						
130 -0.063	135 +0.040	135 +0.170 +0.100	130.270 130.110	13050				13060	13080	13090	13095	130100	130110						
140 -0.063	145 +0.040	145 +0.170 +0.100	140.270 140.110	14050				14060	14080	14090	14095	140100	140110						
150 -0.063	155 +0.040	155 +0.170 +0.100	150.270 150.110	15050				15060	15080	15090	15095	150100	150110						
160 -0.063	165 +0.040	165 +0.170 +0.100	160.270 160.110	16050				16060	16080	16090	16095	160100	160110						
170 -0.063	175 +0.040	175 +0.170 +0.100	170.270 170.110	17050				17060	17080	17090	17095	170100	170110						
180 -0.063	185 +0.046	185 +0.210 +0.130	180.276 180.110	0.339 0.110				18050	18060	18080	18090	18095	180100	180110					
190 -0.072	195 +0.046	195 +0.210 +0.130	190.276 190.110					19050	19060	19080	19090	19095	190100	190110	190120				
200 -0.072	205 +0.046	205 +0.210 +0.130	200.276 200.110		20050	20060	20080	20090	20095	200100	200110	200120							
220 -0.072	225 +0.046	225 +0.210 +0.130	220.276 220.110		22050	22060	22080	22090	22095	220100	220110	220120							
240 -0.072	245 +0.046	245 +0.210 +0.130	240.276 240.110		24050	24060	24080	24090	24095	240100	240110	240120							
250 -0.072	255 +0.052	255 +0.260 +0.170	250.282 250.110		0.354 0.110	25050	25060	25080	25090	25095	250100	250110	250120						
260 -0.081	265 +0.052	265 +0.260 +0.170	260.282 260.110	26050		26060	26080	26090	26095	260100	260110	260120							
280 -0.081	285 +0.052	285 +0.260 +0.170	280.282 280.110	28050		28060	28080	28090	28095	280100	280110	280120							
300 -0.081	305 +0.052	305 +0.260 +0.170	300.282 300.110	30050		30060	30080	30090	30095	300100	300110	300120							